

Natural Gas

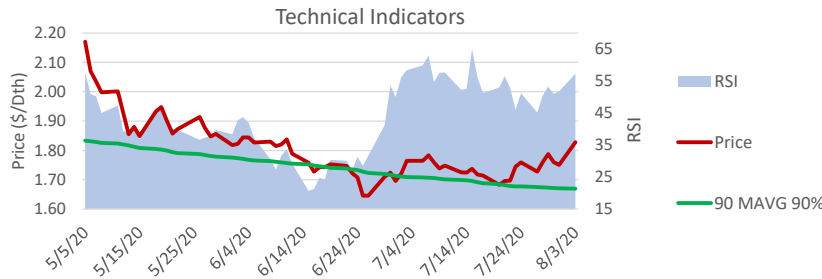
Wholesale Point: PJM West Hub - Symbol NG / XPG
Trade Date: 8/3/20

NYMEX Henry Hub

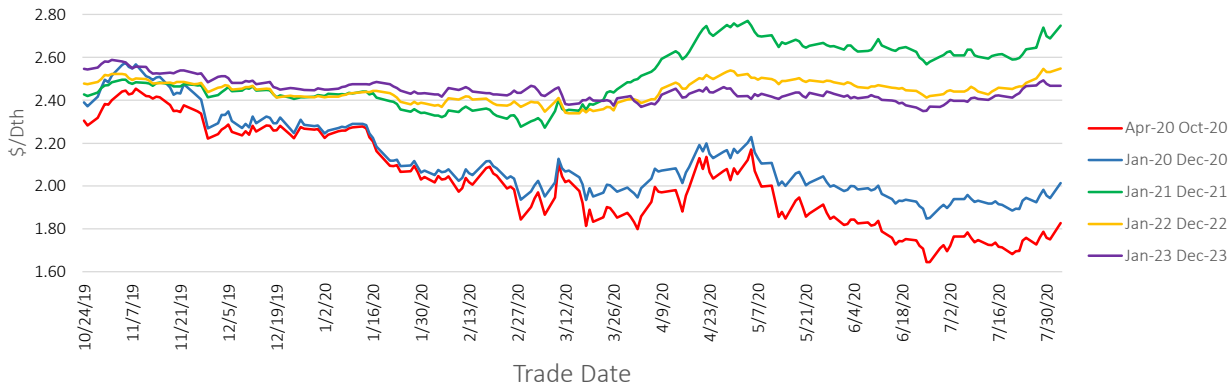
Technical Indicator Buy Sentiment Triggers

Current price below 90% of the 90 Moving Average (90 MAVG 90%)
Relative Strength Indicator (RSI) Below 40 when 90 MAVG 90% is also triggered
RSI below 30 when 90 MAVG 90% is not triggered

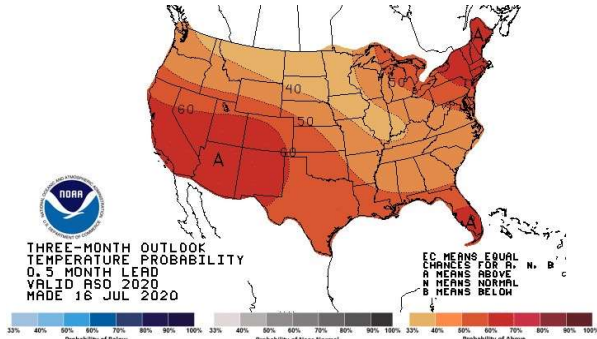
| Start | End | Current Market Prices (\$/Dth) | | | Technical Indicators | | | Future Contract Term Pricing (\$/Dth) | | |
|--------|--------|--------------------------------|-----------|------------|----------------------|--------|-----------|---------------------------------------|---------------|----------------|
| | | Current | Last Week | Last Month | 90 MAVG | RSI | Sentiment | Start Month | Term (Months) | Price (\$/Dth) |
| Apr-20 | Oct-20 | 1.828 | 1.728 | 1.764 | 1.485 | 57.217 | Wait | Dec-19 | 12 | 1.916 |
| Jan-20 | Dec-20 | 2.014 | 1.925 | 1.940 | 1.604 | 64.277 | Wait | Dec-19 | 24 | 2.277 |
| Jan-21 | Dec-21 | 2.748 | 2.644 | 2.610 | 2.112 | 44.547 | Wait | Dec-19 | 36 | 2.344 |
| Jan-22 | Dec-22 | 2.548 | 2.502 | 2.440 | 1.976 | 70.934 | Wait | Jan-19 | 12 | 2.628 |
| Jan-23 | Dec-23 | 2.467 | 2.469 | 2.398 | 1.934 | 53.285 | Wait | Jan-19 | 24 | 2.285 |
| | | | | | | | | Jan-19 | 36 | 2.402 |
| | | | | | | | | Jan-20 | 12 | 1.941 |
| | | | | | | | | Jan-20 | 24 | 2.289 |
| | | | | | | | | Jan-20 | 36 | 2.347 |
| | | | | | | | | Jan-21 | 12 | 2.636 |
| | | | | | | | | Jan-21 | 24 | 2.550 |
| | | | | | | | | Jan-21 | 36 | 2.503 |



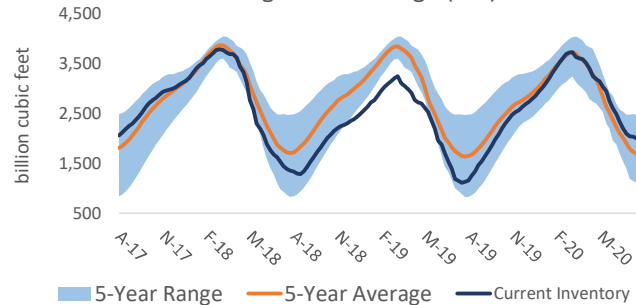
NYMEX Wholesale Natural Gas Price Strips



3-Month Temperature Projections



Working Gas in Storage (EIA)



Pricing in this report is indicative and does not reflect an offer to sell. Please contact PRX Energy for price quotes in your area.