

## Natural Gas

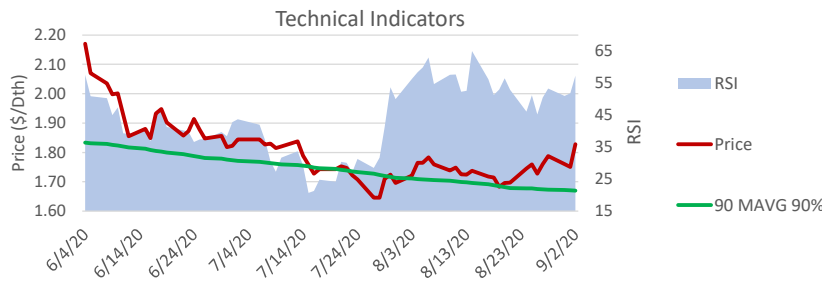
Wholesale Point: PJM West Hub - Symbol NG / XPG  
Trade Date: 9/2/20

NYMEX Henry Hub

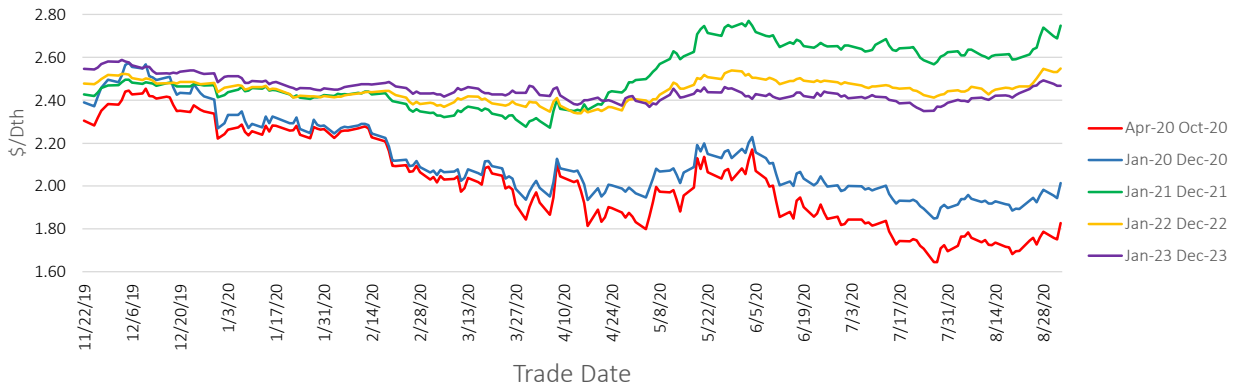
### Technical Indicator Buy Sentiment Triggers

Current price below 90% of the 90 Moving Average (90 MAVG 90%)  
Relative Strength Indicator (RSI) Below 40 when 90 MAVG 90% is also triggered  
RSI below 30 when 90 MAVG 90% is not triggered

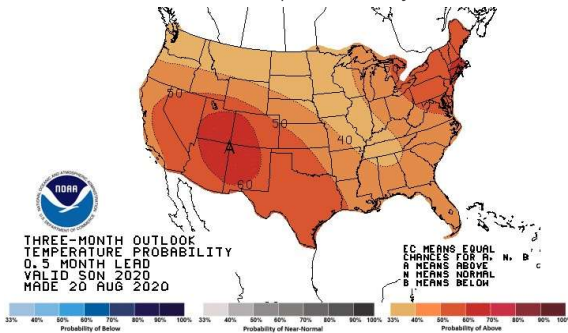
Start	End	Current Market Prices (\$/Dth)			Technical Indicators			Future Contract Term Pricing (\$/Dth)		
		Current	Last Week	Last Month	90 MAVG	RSI	Sentiment	Start Month	Term (Months)	Price (\$/Dth)
Apr-20	Oct-20	1.828	1.728	1.764	1.485	57.217	Wait	Dec-19	12	1.916
Jan-20	Dec-20	2.014	1.925	1.940	1.604	64.277	Wait	Dec-19	24	2.277
Jan-21	Dec-21	2.748	2.644	2.610	2.112	44.547	Wait	Dec-19	36	2.344
Jan-22	Dec-22	2.548	2.502	2.440	1.976	70.934	Wait	Jan-19	12	2.628
Jan-23	Dec-23	2.467	2.469	2.398	1.934	53.285	Wait	Jan-19	24	2.285
								Jan-19	36	2.402
								Jan-20	12	1.941
								Jan-20	24	2.289
								Jan-20	36	2.347
								Jan-21	12	2.636
								Jan-21	24	2.550
								Jan-21	36	2.503



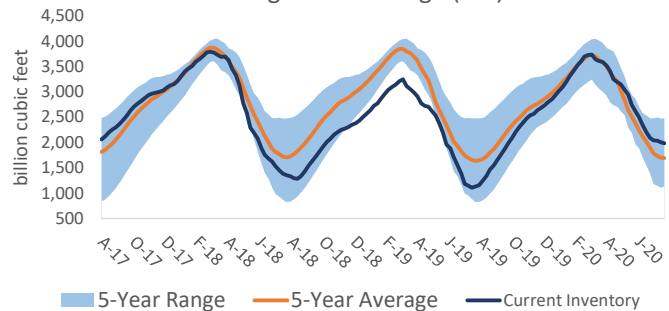
### NYMEX Wholesale Natural Gas Price Strips



### 3-Month Temperature Projections



### Working Gas in Storage (EIA)



Pricing in this report is indicative and does not reflect an offer to sell. Please contact PRX Energy for price quotes in your area.