

Natural Gas

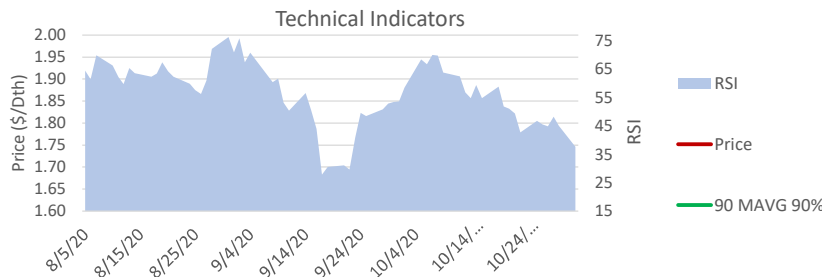
Wholesale Point: PJM West Hub - Symbol NG / XPG
Trade Date: 11/2/20

NYMEX Henry Hub

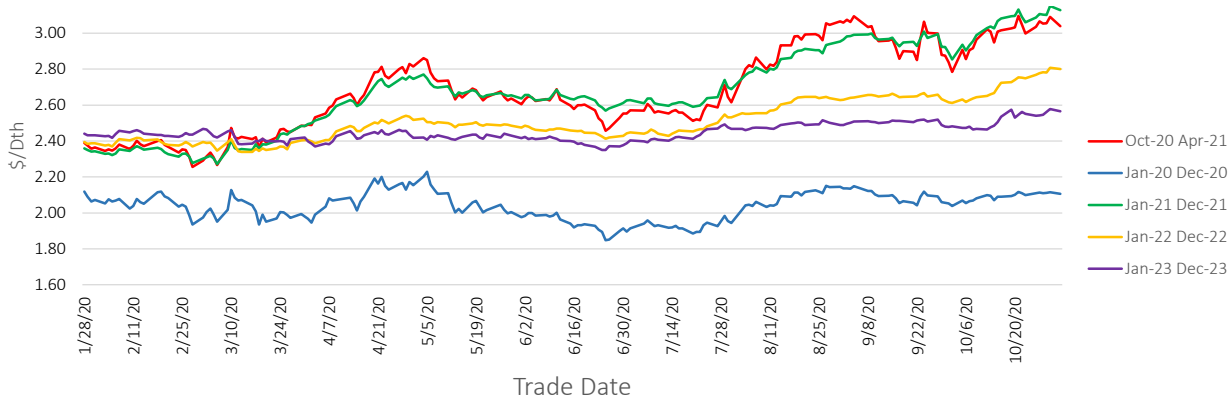
Technical Indicator Buy Sentiment Triggers

Current price below 90% of the 90 Moving Average (90 MAVG 90%)
Relative Strength Indicator (RSI) Below 40 when 90 MAVG 90% is also triggered
RSI below 30 when 90 MAVG 90% is not triggered

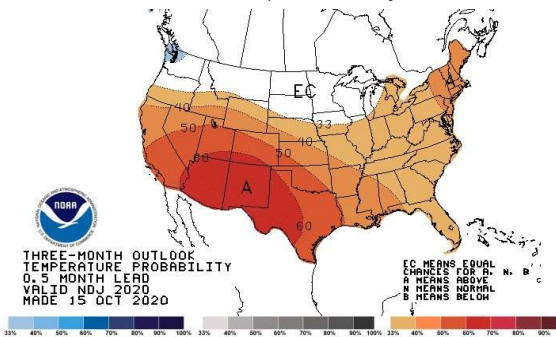
Start	End	Current Market Prices (\$/Dth)			Technical Indicators			Future Contract Term Pricing (\$/Dth)		
		Current	Last Week	Last Month	90 MAVG	RSI	Sentiment	Start Month	Term (Months)	Price (\$/Dth)
Oct-20	Apr-21	3.038	3.035	2.906	2.285	37.670	Wait	Dec-19	12	2.011
Jan-20	Dec-20	2.106	2.109	2.068	1.637	38.071	Wait	Dec-19	24	2.487
Jan-21	Dec-21	3.128	3.086	2.935	2.293	56.819	Wait	Dec-19	36	2.545
Jan-22	Dec-22	2.800	2.768	2.632	2.082	82.255	Wait	Jan-19	12	2.628
Jan-23	Dec-23	2.564	2.540	2.473	1.986	42.313	Wait	Jan-19	24	2.348
								Jan-19	36	2.550
								Jan-20	12	2.068
								Jan-20	24	2.511
								Jan-20	36	2.553
								Jan-21	12	2.955
								Jan-21	24	2.796
								Jan-21	36	2.685



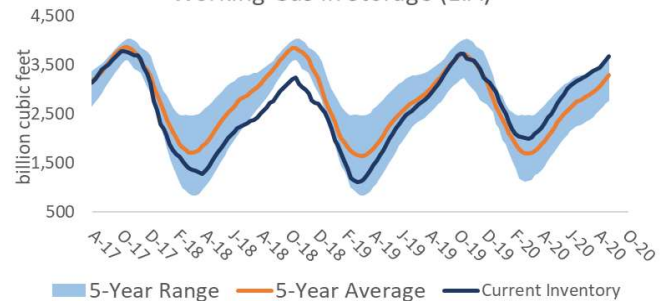
NYMEX Wholesale Natural Gas Price Strips



3-Month Temperature Projections



Working Gas in Storage (EIA)



Pricing in this report is indicative and does not reflect an offer to sell. Please contact PRX Energy for price quotes in your area.