

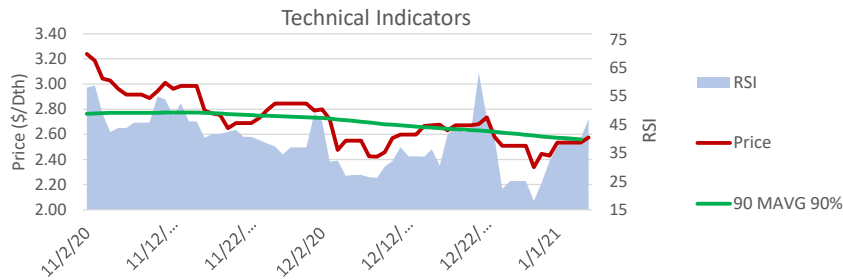
## Natural Gas

NYMEX Henry Hub  
Trade Date: 2/1/21

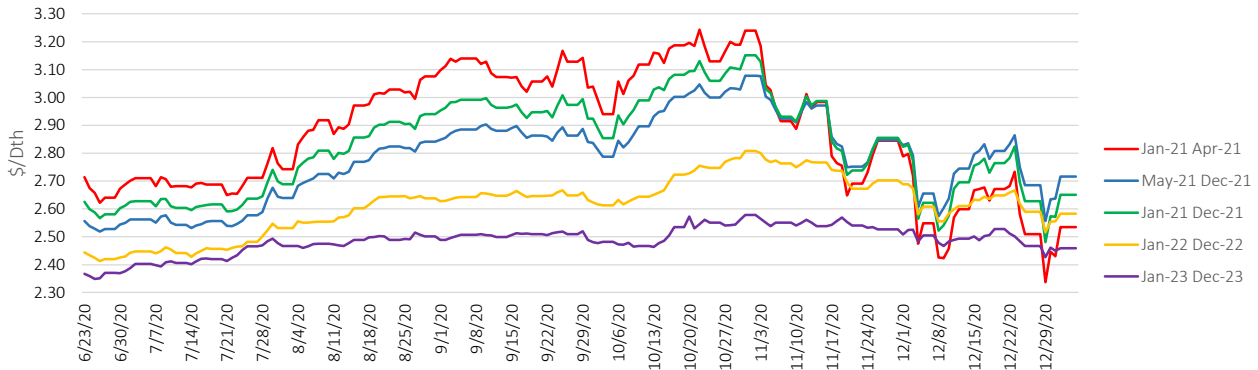
### Technical Indicator Buy Sentiment Triggers

Current price below 90% of the 90 Moving Average (90 MAVG 90%)  
Relative Strength Indicator (RSI) Below 40 when 90 MAVG 90% is also triggered  
RSI below 30 when 90 MAVG 90% is not triggered

| Start  | End    | Current Market Prices (\$/Dth) |           |            | Technical Indicators |        |           | Future Contract Term Pricing (\$/Dth) |               |                |
|--------|--------|--------------------------------|-----------|------------|----------------------|--------|-----------|---------------------------------------|---------------|----------------|
|        |        | Current                        | Last Week | Last Month | 90 MAVG              | RSI    | Sentiment | Start Month                           | Term (Months) | Price (\$/Dth) |
| Feb-21 | Apr-21 | 2.534                          | 2.509     | 2.548      | 2.166                | 40.039 | Wait      | Feb-21                                | 12            | 2.832          |
| May-21 | Dec-21 | 2.716                          | 2.685     | 2.656      | 2.249                | 29.657 | Buy       | Feb-21                                | 24            | 2.739          |
| Jan-21 | Dec-21 | 2.650                          | 2.627     | 2.622      | 2.221                | 40.072 | Wait      | Feb-21                                | 36            | 2.674          |
| Jan-22 | Dec-22 | 2.583                          | 2.590     | 2.608      | 2.135                | 25.202 | Buy       | Jan-20                                | 12            | 2.077          |
| Jan-23 | Dec-23 | 2.459                          | 2.467     | 2.505      | 2.013                | 54.035 | Wait      | Jan-20                                | 24            | 2.428          |
|        |        |                                |           |            |                      |        |           | Jan-20                                | 36            | 2.507          |
|        |        |                                |           |            |                      |        |           | Jan-21                                | 12            | 2.778          |
|        |        |                                |           |            |                      |        |           | Jan-21                                | 24            | 2.722          |
|        |        |                                |           |            |                      |        |           | Jan-21                                | 36            | 2.664          |
|        |        |                                |           |            |                      |        |           | Jan-22                                | 12            | 2.666          |
|        |        |                                |           |            |                      |        |           | Jan-22                                | 24            | 2.607          |
|        |        |                                |           |            |                      |        |           | Jan-22                                | 36            | 2.586          |

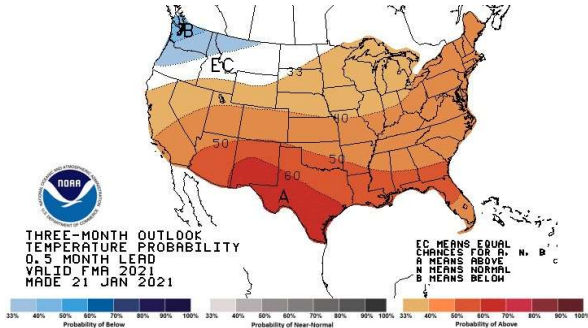


### NYMEX Wholesale Natural Gas Price Strips

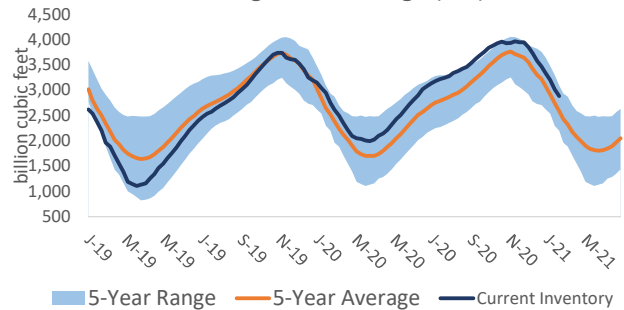


### Trade Date

### 3-Month Temperature Projections



### Working Gas in Storage (EIA)



Pricing in this report is indicative and does not reflect an offer to sell. Please contact PRX Energy for price quotes in your area.